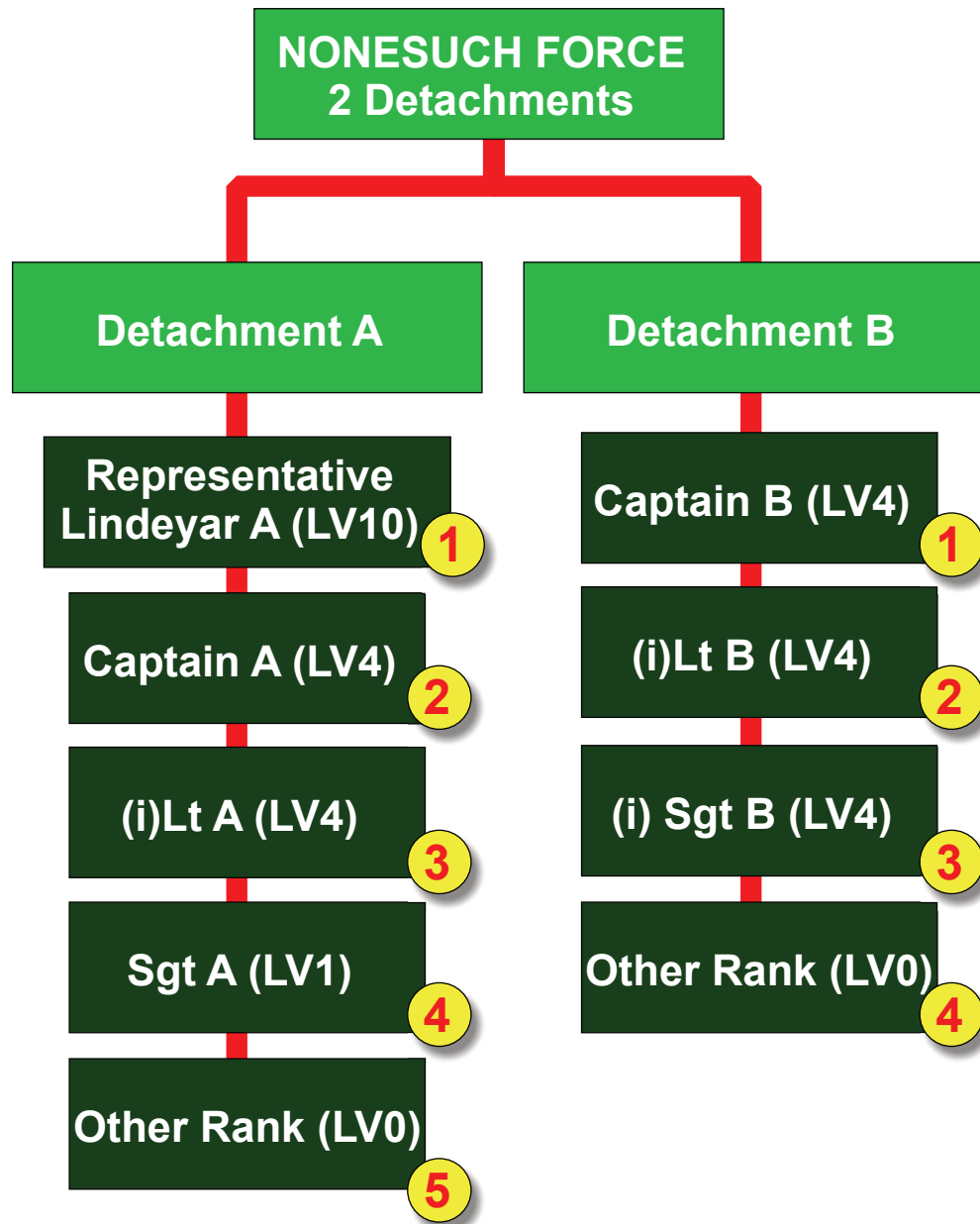


NOTES:

In this option, 2 detachments have been purchased with one optional Insurance Sergeant in Detachment A.

Additional Insurance officers are paid for as additions to the officers within a detachment. The insurance Sergeants REPLACE standard Sergeants.

(i) Indicates 'Insurance'



NOTES:

In this option, 2 detachments have been purchased plus - in addition - Representative Lindeyar had been purchased and given command of Detachment A. One optional Insurance Sergeant has been added to Detachment B.

Additional Insurance officers are paid for as additions to the officers within a detachment. The insurance Sergeants REPLACE standard Sergeants.

(i) Indicates 'Insurance'