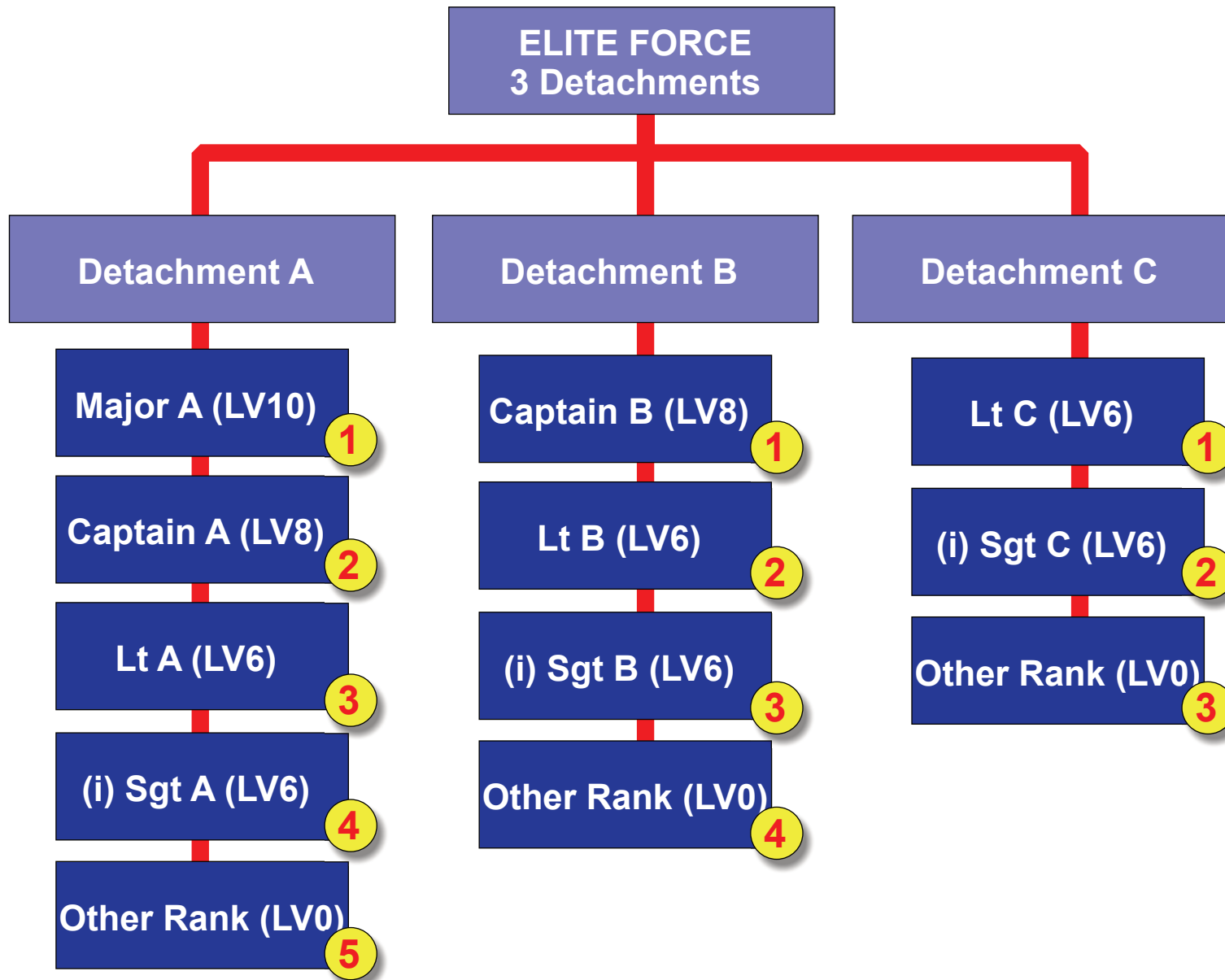


NOTES:

In this option, 2 detachments have both purchased Insurance Sergeants.

The insurance Sergeants REPLACE standard Sergeants.

(i) Indicates 'Insurance'



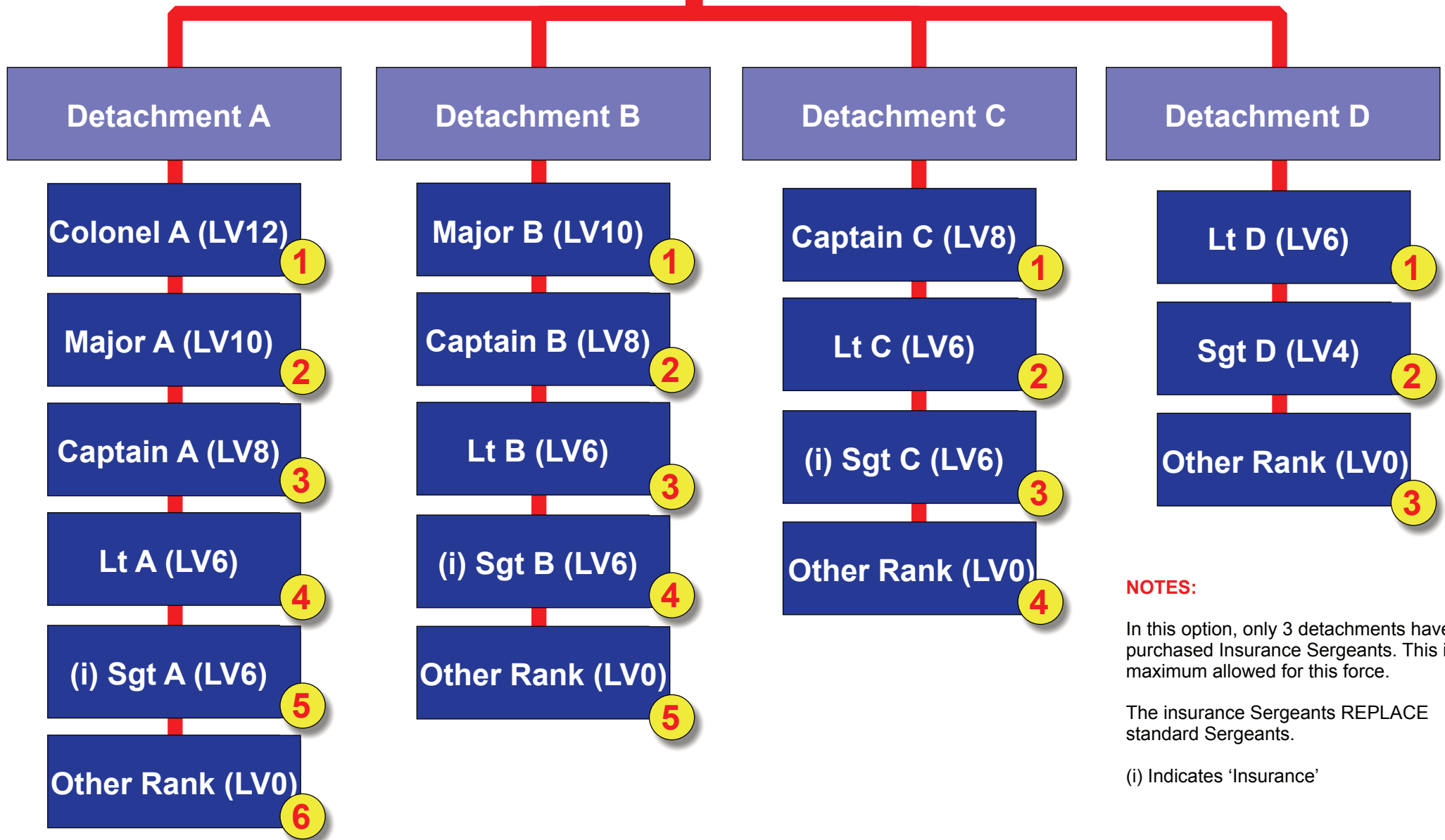
NOTES:

In this option, 3 detachments have purchased Insurance Sergeants. This is the maximum allowed for this force.

The insurance Sergeants REPLACE standard Sergeants.

(i) Indicates 'Insurance'

ELITE FORCE 4 Detachments



NOTES:

In this option, only 3 detachments have purchased Insurance Sergeants. This is the maximum allowed for this force.

The insurance Sergeants REPLACE standard Sergeants.

(i) Indicates 'Insurance'